

# BRICK LETTER BOX

These free plans are courtesy of ....

[www.Brickwork.Net.Au](http://www.Brickwork.Net.Au)

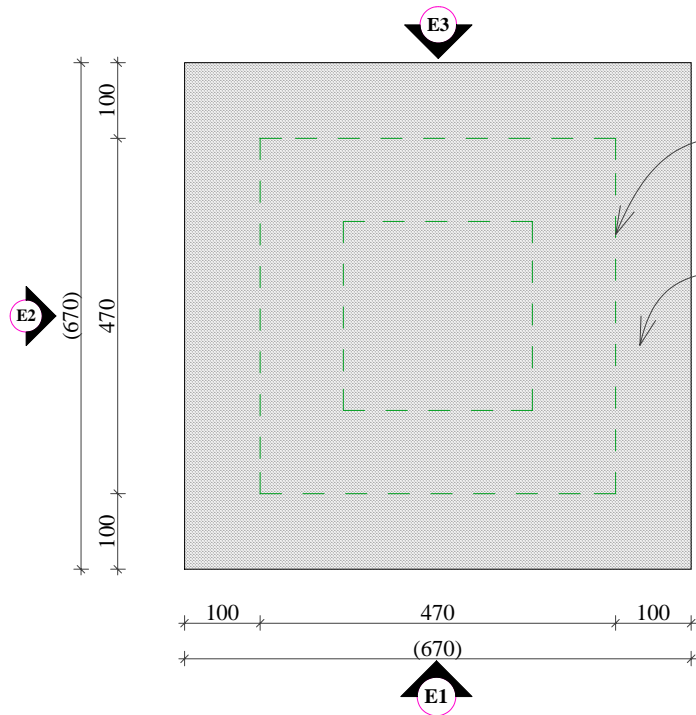
An Australian website dedicated to all things brickwork, from how to lay, to getting help with any problems you may have with your brickwork.

All information is provided free for your use. Seeing as how we can't see what you are doing or attempting to do, the onus is on you to work safely and use any relevant safety gear for the job at hand.

## **Learn new ideas, get tips and hints.**

In order to get the most from these plans be sure to visit [www.Brickwork.Net.Au](http://www.Brickwork.Net.Au) for detailed information on preparation, laying and finishing.





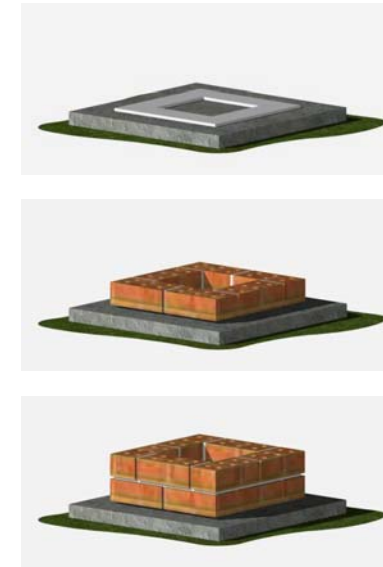
OUTLINE OF FIRST COURSE ABOVE SHOWN DASHED

CONCRETE BASE

**NOTE:**

For a letter box or fence pier it is better to go deeper for the footing / base as the area of brickwork will be a lot smaller in comparison to a BBQ or such and will not have the area to distribute the weight.

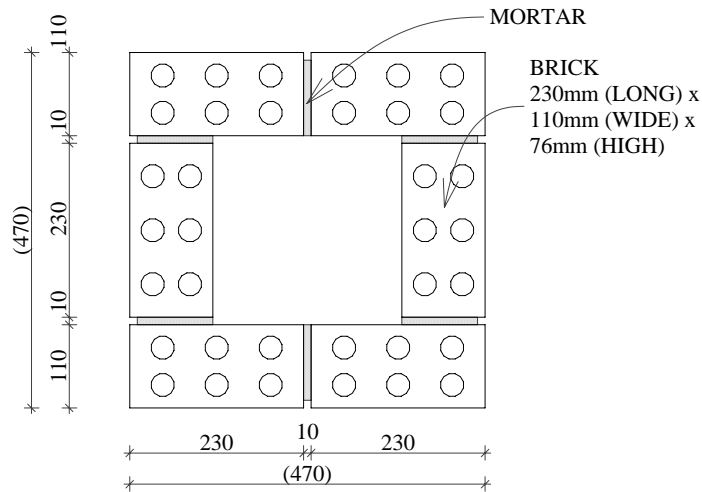
The concrete should ideally project from the base of the brickwork by about 100mm or so, its not vital that it does project, it just gives the concrete more bearing on the ground which helps spread the weight a little more.



**NOTE:** As the courses continue they tend to replicate the same pattern. Each course has been shown on these plans as a checklist to ensure correct techniques are applied.

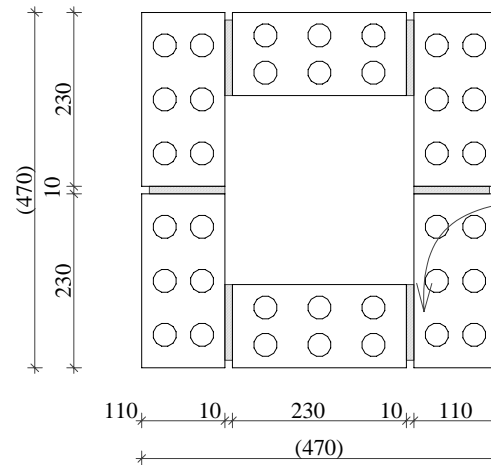
Courses	Metric (mm)	Imperial
1	86	3 3/8"
2	172	6 3/4"
3	258	10 1/8"
4	344	13 1/2"
5	430	16 7/8"
6	516	20 1/4"
7	602	23 5/8"
8	688	27"
9	775	30 3/8"
10	860	33 3/4"

**STEP #1 - BASE SLAB PREPARATION 1:10**



MORTAR

BRICK  
230mm (LONG) x  
110mm (WIDE) x  
76mm (HIGH)



NOTE: BRICK LAYOUT ALTERNATES FROM PREVIOUS COURSE WITH FULL BRICK OVER MORTAR GAP BELOW

**STEP #2 - BRICK COURSE #1 1:10**

**STEP #3 - BRICK COURSE #2 1:10**

NOTES:  
THIS PLAN HAVE BEEN PROVIDED FREE OF CHARGE COURTESY OF [www.Brickwork.Net.Au](http://www.Brickwork.Net.Au). THEY ARE INTENDED TO BE USED AS A GUIDE ONLY. IF IN DOUBT PLEASE CONSULT A PROFESSIONAL. THE ORGINISERS OF [www.Brickwork.Net.Au](http://www.Brickwork.Net.Au) CANNOT BE HELD RESPONSIBLE FOR ANY MATTERS ARRISING FROM THE USE OF THESE PLANS. USE SAFETY GEAR.

ALL DIMENSIONS ARE IN MILLIMETERS (mm) UNLESS OTHERWISE NOTED.

Job Title  
**BRICK LETTER BOX**

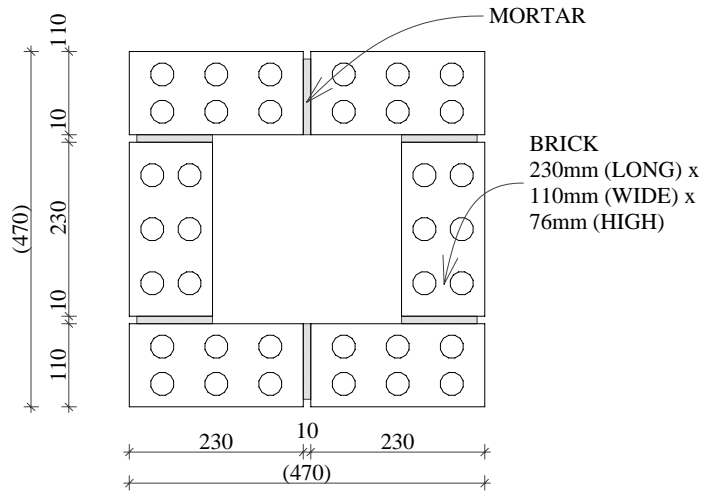
Drawing Title  
**BASE SLAB / 1st & 2nd COURSE**

Drawn by **MS**

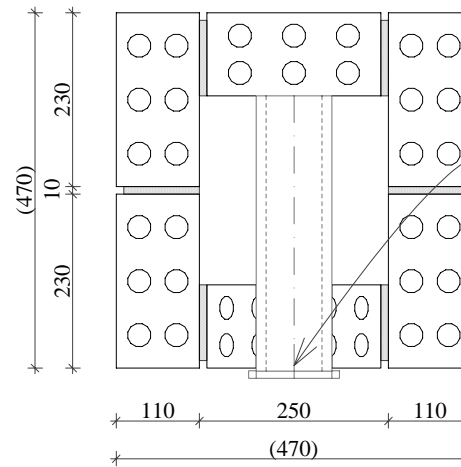
Date **FEBRUARY 2007**

Scales **AS INDICATED @ A4**

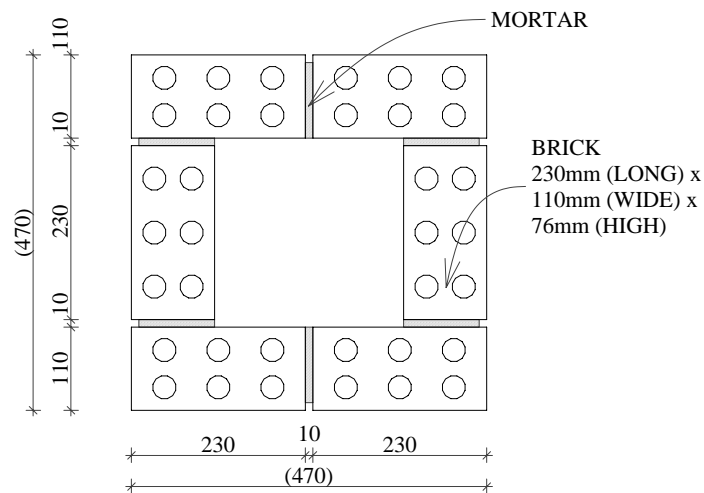
Drawing Number  
**A-02/8**



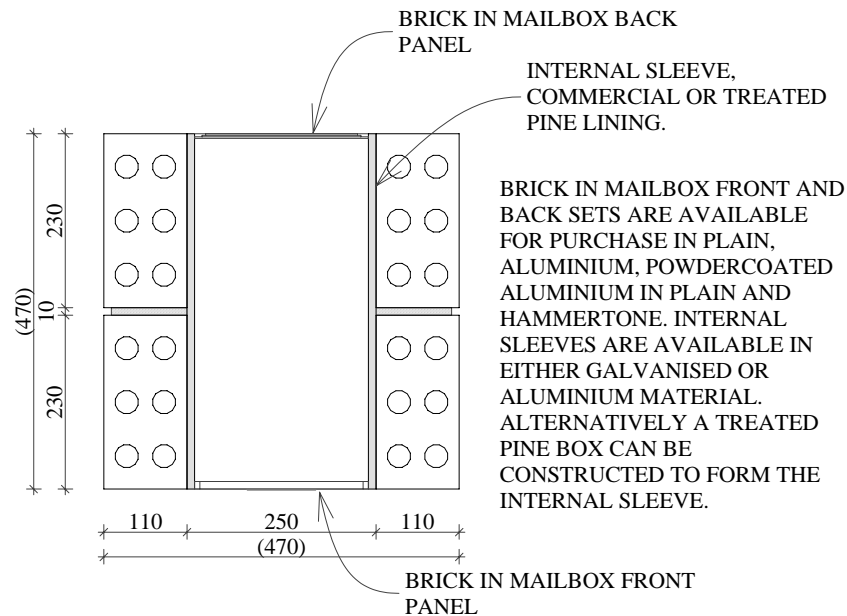
**STEP #4 - BRICK COURSE #3 1:10**



**STEP #5 - BRICK COURSE #4 1:10**



**STEP #6 - BRICK COURSE #5 1:10**



**STEP #7 - BRICK COURSE #6 1:10**



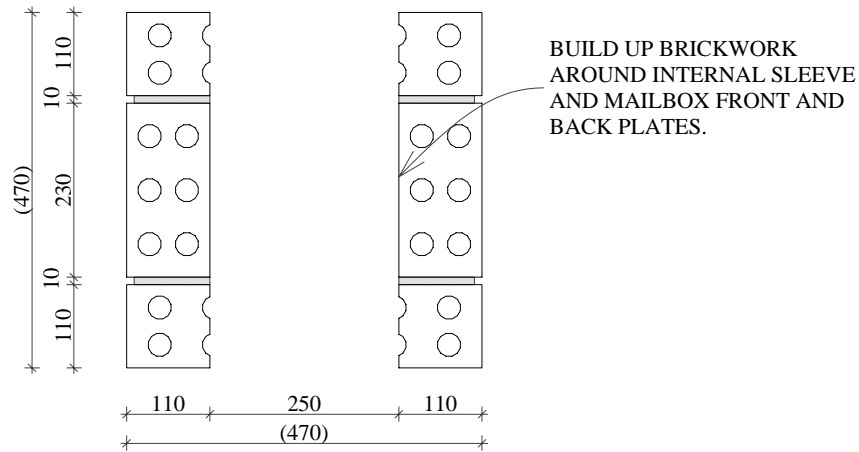
**NOTES:**  
THIS PLAN HAVE BEEN PROVIDED FREE OF CHARGE COURTESY OF [www.Brickwork.Net.Au](http://www.Brickwork.Net.Au). THEY ARE INTENDED TO BE USED AS A GUIDE ONLY. IF IN DOUBT PLEASE CONSULT A PROFESSIONAL. THE ORGANISERS OF [www.Brickwork.Net.Au](http://www.Brickwork.Net.Au) CANNOT BE HELD RESPONSIBLE FOR ANY MATTERS ARISING FROM THE USE OF THESE PLANS. USE SAFETY GEAR.

ALL DIMENSIONS ARE IN MILLIMETERS (mm) UNLESS OTHERWISE NOTED.

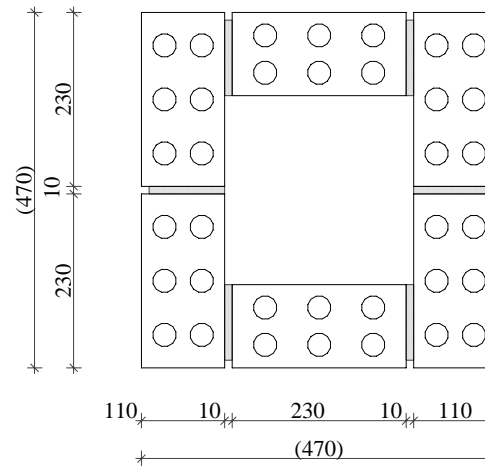
Job Title	<b>BRICK LETTER BOX</b>
Drawing Title	<b>3rd - 6th COURSES</b>
Drawn by	MS
Date	FEBRUARY 2007
Scales	AS INDICATED @ A4
Drawing Number	<b>A-03/8</b>

© [www.Brickwork.Net.Au](http://www.Brickwork.Net.Au)

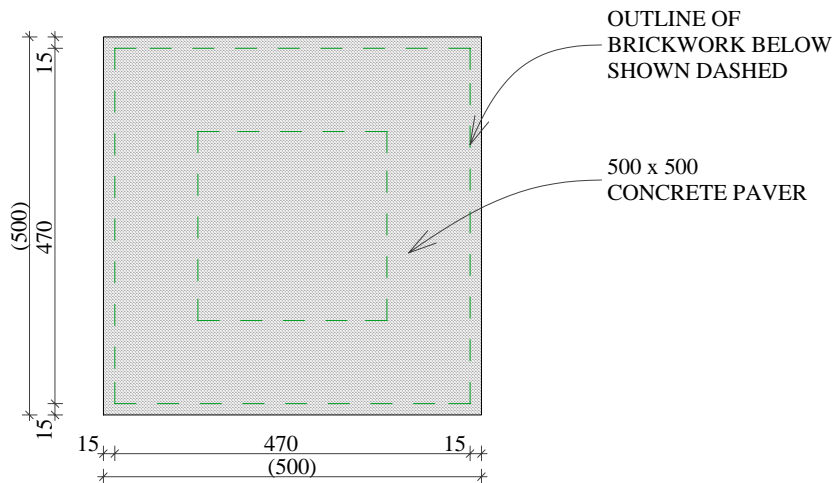
**NOTE:** Do your postman a favour - check out <http://www.auspost.com.au> for details on the correct placement of your new letterbox. They are heavy to move when finished!



**STEP #8 - BRICK COURSE #7 1:10**



**STEP #9 - BRICK COURSE #8 1:10**



**STEP #10 - BRICK COURSE #9 1:10**



NOTES:  
THIS PLAN HAVE BEEN PROVIDED FREE OF CHARGE  
COURTESY OF [www.Brickwork.Net.Au](http://www.Brickwork.Net.Au). THEY ARE  
INTENDED TO BE USED AS A GUIDE ONLY. IF IN  
DOUBT PLEASE CONSULT A PROFESSIONAL. THE  
ORGINISERS OF [www.Brickwork.Net.Au](http://www.Brickwork.Net.Au) CANNOT BE  
HELD RESPONSIBLE FOR ANY MATTERS ARRISING  
FROM THE USE OF THESE PLANS. USE SAFETY GEAR.

ALL DIMENSIONS ARE IN MILLIMETERS (mm) UNLESS  
OTHERWISE NOTED.

Job Title

**BRICK LETTER BOX**

Drawing Title

**7th - 9th COURSES**

Drawn by MS

Date FEBRUARY 2007

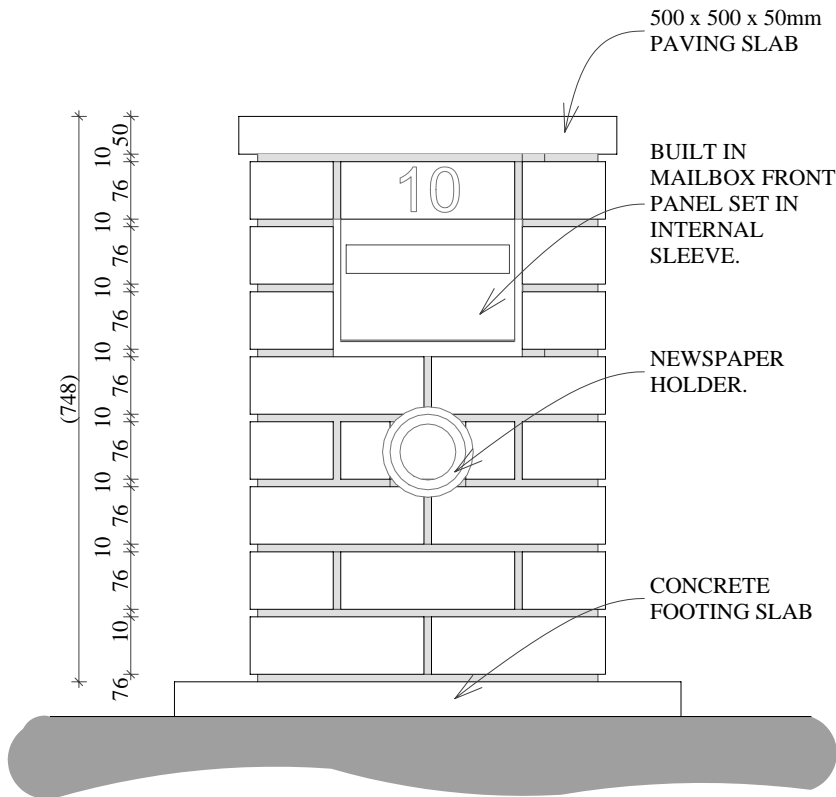
Scales AS INDICATED @ A4

Drawing Number

**A-04/8**

© [www.Brickwork.Net.Au](http://www.Brickwork.Net.Au)

NOTE: Do your postman a favour - check out <http://www.auspost.com.au> for details on the correct placement of your new letterbox. They are heavy to move when finished!



**ELEVATION E1 1:10**

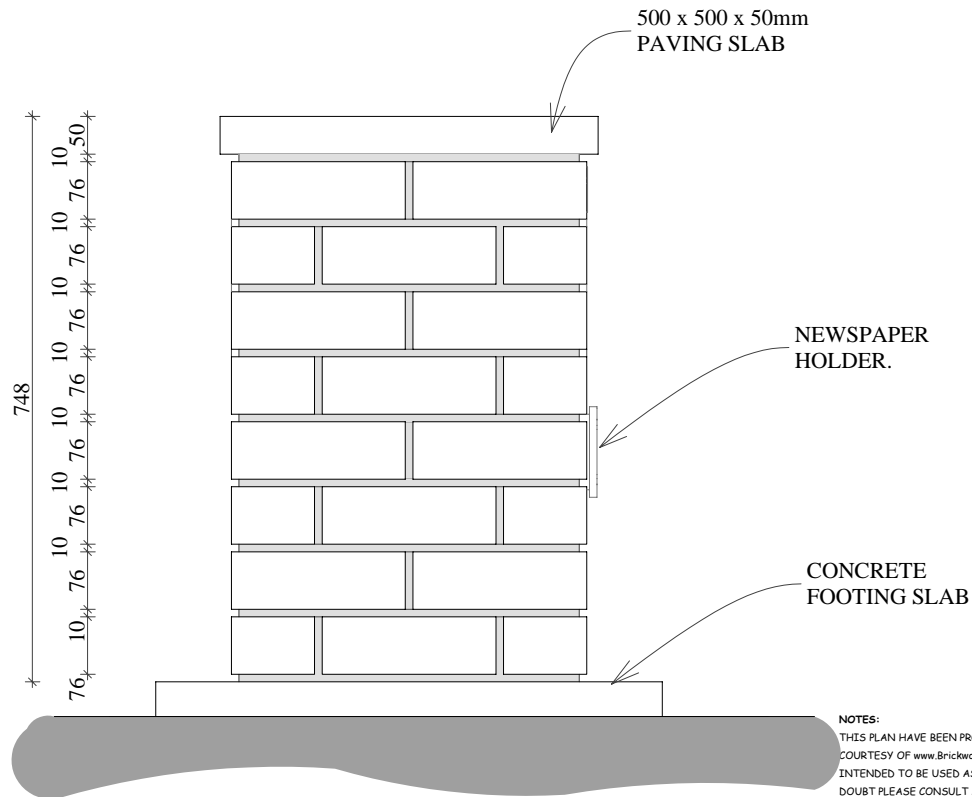
**NOTE:**

The mailbox components can be sourced from a number of different outlets. The components used in this design are based on those from <http://www.letterboxman.com.au>.

The Letterbox Man, established in 1963, is one of the oldest letterbox companies in Australia, specialising in the manufacture of quality letterboxes. The Letterbox Man is now owned by Letterbox Man Enterprises Pty Ltd.

When you own a Letterbox Man letterbox, you will not only have a quality product, you also have peace of mind with one year free insurance against theft and vandalism (conditions apply - and only applicable in Australia). We are 100% Australian owned and proud to offer letterboxes that are 100% Australian Made.

The owners of Brickwork.net.au have no connection with the Letterbox Man. The Letterbox Mans' products are being recommended as he has a good website and is 100% Australian made ..... just like Brickwork.net.au.



**ELEVATION E2 1:10**

**NOTES:**  
THIS PLAN HAVE BEEN PROVIDED FREE OF CHARGE COURTESY OF [www.BrickworkNet.Au](http://www.BrickworkNet.Au). THEY ARE INTENDED TO BE USED AS A GUIDE ONLY. IF IN DOUBT PLEASE CONSULT A PROFESSIONAL. THE ORGINISERS OF [www.BrickworkNet.Au](http://www.BrickworkNet.Au) CANNOT BE HELD RESPONSIBLE FOR ANY MATTERS ARRISING FROM THE USE OF THESE PLANS. USE SAFETY GEAR.

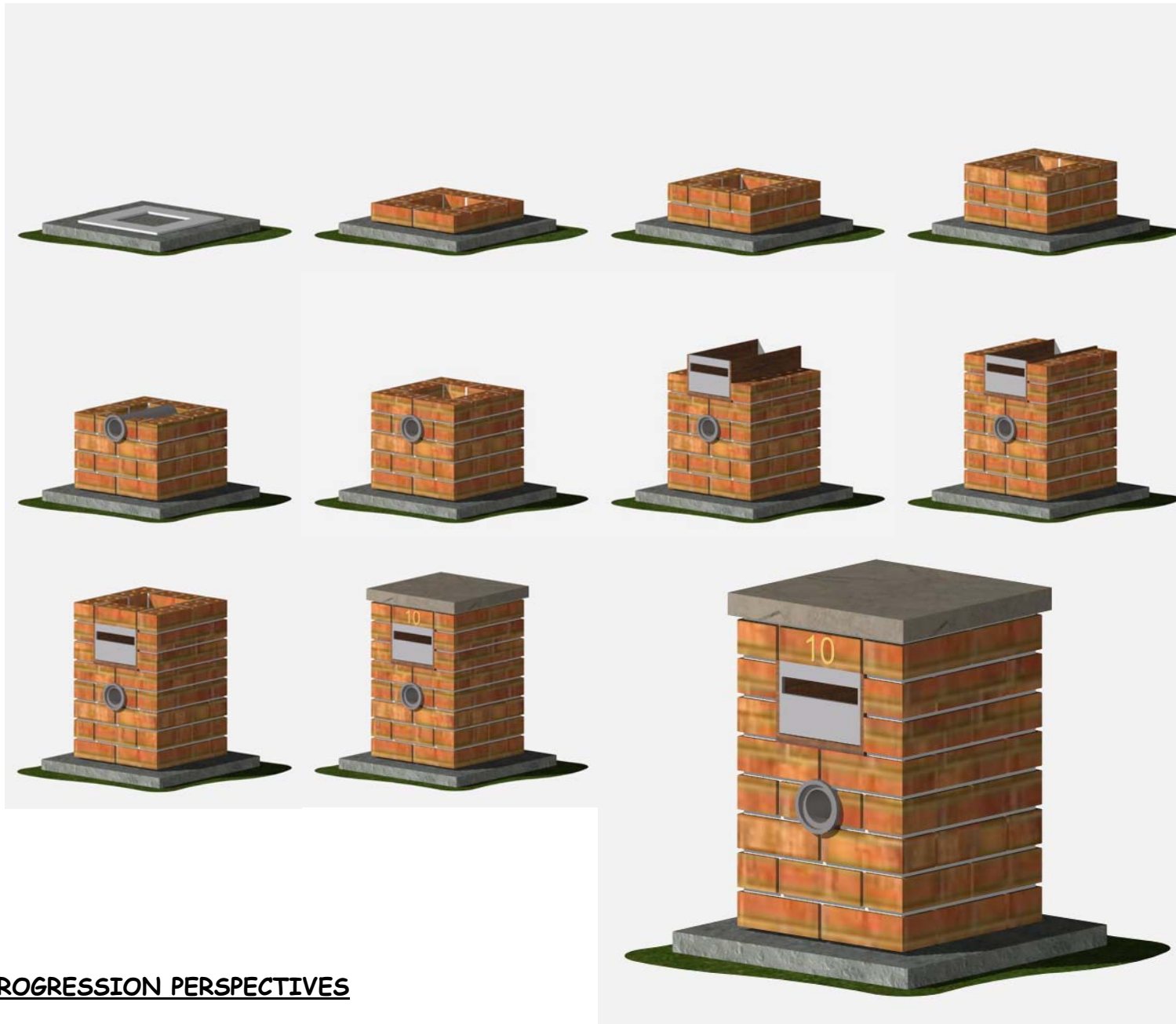
ALL DIMENSIONS ARE IN MILLIMETERS (mm) UNLESS OTHERWISE NOTED.

Job Title	<b>BRICK LETTER BOX</b>	
Drawing Title	<b>ELEVATIONS</b>	
Drawn by	MS	
Date	FEBRUARY 2007	
Scales	AS INDICATED @ A4	
Drawing Number	<b>A-05/8</b>	

Courses	Metric (mm)	Imperial
1	86	3 3/8"
2	172	6 3/4"
3	258	10 1/8"
4	344	13 1/2"
5	430	16 7/8"
6	516	20 1/4"
7	602	23 5/8"
8	688	27"
9	775	30 3/8"
10	860	33 3/4"

**NOTE: Do your postman a favour - check out <http://www.auspost.com.au> for details on the correct placement of your new letterbox. They are heavy to move when finished!**





**PROGRESSION PERSPECTIVES**

Courses	Metric (mm)	Imperial
1	86	3 3/8"
2	172	6 3/4"
3	258	10 1/8"
4	344	13 1/2"
5	430	16 7/8"
6	516	20 1/4"
7	602	23 5/8"
8	688	27"
9	775	30 3/8"
10	860	33 3/4"

**NOTES:**  
 THIS PLAN HAVE BEEN PROVIDED FREE OF CHARGE COURTESY OF [www.Brickwork.Net.Au](http://www.Brickwork.Net.Au). THEY ARE INTENDED TO BE USED AS A GUIDE ONLY. IF IN DOUBT PLEASE CONSULT A PROFESSIONAL. THE ORGINISERS OF [www.Brickwork.Net.Au](http://www.Brickwork.Net.Au) CANNOT BE HELD RESPONSIBLE FOR ANY MATTERS ARRISING FROM THE USE OF THESE PLANS. USE SAFETY GEAR.

ALL DIMENSIONS ARE IN MILLIMETERS (mm) UNLESS OTHERWISE NOTED.

Job Title  
**BRICK LETTER BOX**

Drawing Title  
**PERSPECTIVES**

Drawn by **MS**

Date **FEBRUARY 2007**

Scales **AS INDICATED @ A4**

Drawing Number  
**A-07/8**

© [www.Brickwork.Net.Au](http://www.Brickwork.Net.Au)

The purpose of these plans is to indicate the basic principles of constructing a brickwork letter box. If you can follow these steps you should have no problem in customising the design to suit your own requirements. The methodology will be similar no matter what your final design may be. Be sure to sketch out your plan first to make sure it all works and then give it a go.



Courses	Metric (mm)	Imperial
1	86	3 3/8"
2	172	6 3/4"
3	258	10 1/8"
4	344	13 1/2"
5	430	16 7/8"
6	516	20 1/4"
7	602	23 5/8"
8	688	27"
9	775	30 3/8"
10	860	33 3/4"

NOTES:  
THIS PLAN HAVE BEEN PROVIDED FREE OF CHARGE COURTESY OF [www.BrickworkNet.Au](http://www.BrickworkNet.Au). THEY ARE INTENDED TO BE USED AS A GUIDE ONLY. IF IN DOUBT PLEASE CONSULT A PROFESSIONAL. THE ORGINISERS OF [www.BrickworkNet.Au](http://www.BrickworkNet.Au) CANNOT BE HELD RESPONSIBLE FOR ANY MATTERS ARRISING FROM THE USE OF THESE PLANS. USE SAFETY GEAR.

ALL DIMENSIONS ARE IN MILLIMETERS (mm) UNLESS OTHERWISE NOTED.

Job Title  
**BRICK LETTER BOX**

Drawing Title  
**DESIGN ALTERNATIVES**

Drawn by **MS**

Date **FEBRUARY 2007**

Scales **AS INDICATED @ A4**

Drawing Number  
**A-08/8**

© [www.Brickwork.Net.Au](http://www.Brickwork.Net.Au)

It is possible to combine a number of the plans featured on [Brickwork.net.au](http://Brickwork.net.au) to create custom designs. Here the design has incorporated the brick letter box plans with the basic planter design to produce a very standard letter box / planter combination. It is suggested by management that you think carefully before incorporating the letter box plans with the BBQ plans to create a letter box BBQ!